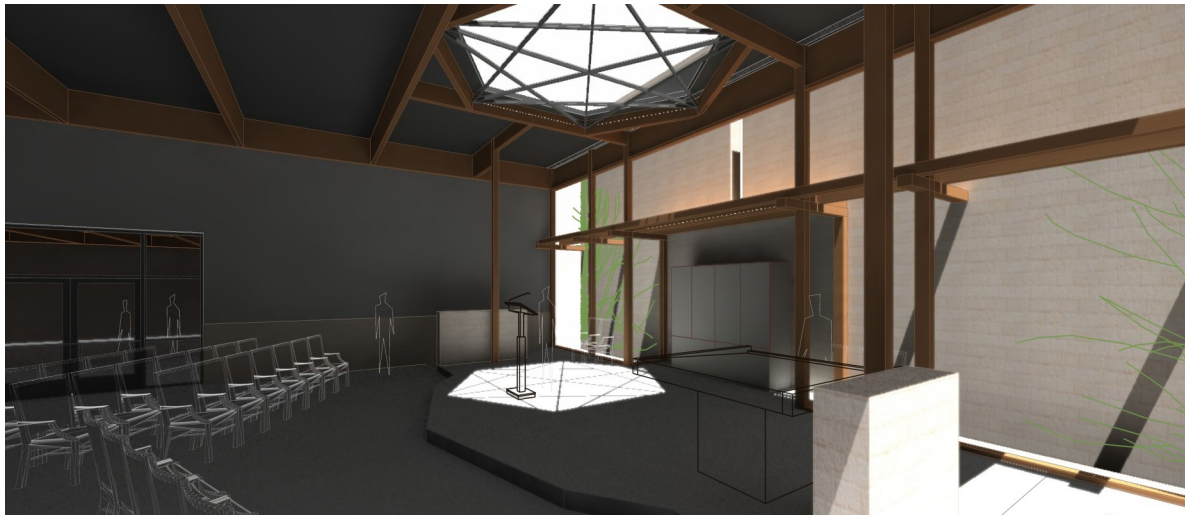


- |             |              |
|-------------|--------------|
| 1 ark       | 7 office     |
| 2 bemah     | 8 library    |
| 3 sanctuary | 9 class      |
| 4 hall      | 10 kitchen   |
| 5 foyer     | 11 mikveh    |
| 6 rabbi     | 12 courtyard |

functional plan 7500 sf 132'



CONGREGATION BETH ISRAEL Center for Jewish Life



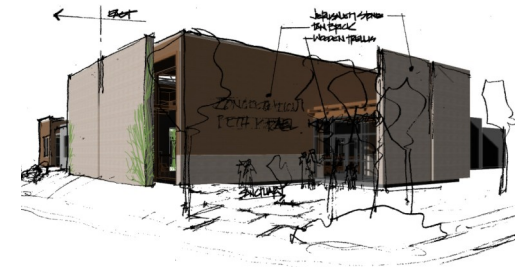
looking east from the rear of the Hall



section looking north

Griffith Architects was asked by the CBI board to investigate the spatial requirements and possible form for a new Center for Jewish Life. We are midway in this process, having polled the Congregation, reviewed existing facilities, developed a spatial program, and held a vision meeting with interested members.

A number of themes have emerged—expandable Sanctuary/meeting Hall—views to the landscape—courtyard—separate buildings—security—sacred without pretense—sensitive to the community—low profile, but welcoming—green design within reasonable costs—natural materials—We show current snapshots from our electronic model, showing the state of our thinking in expressing these themes within the requirements of the program.



watch our progress:  
[griffitharchitects.com/1717-CBI](http://griffitharchitects.com/1717-CBI)